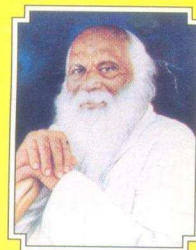




ENVOY

A Newsletter of KBPIMSR, Satara



Volume-1 | Number-1 | May 2011

CONTENTS

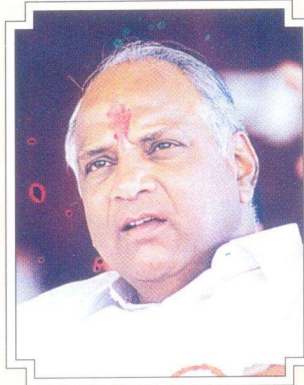
1. Our Mentors
2. Director's Perspective
3. Rayat Shikshan Sanstha
4. KBPIMSR - About Institute
5. Reserch Activities
6. Academic Scholar
7. Co-Curricular Activities
8. Teacher's Workshop
9. Industrial Visit
10. Sports Activities
11. Placement Cell
12. Alumni Cell
13. SKY
14. Our Social Activities
15. KEN
16. Faculty Profile

Rayat Shikshan Sanstha's
Karmaveer Bhaurao Patil Institute of Management Studies and
Research, Varye, Satara.

Post Box No.67, Survey No.467,468/2,Varye,Tal.&Dist.Satara.

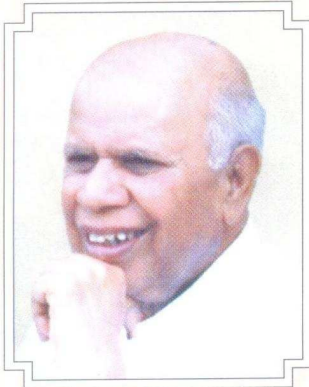
Our Mentors

President



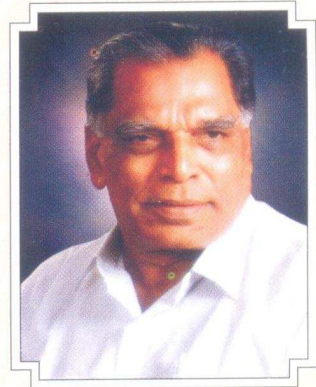
Hon'ble Sharadchandraji Pawar

Chairman



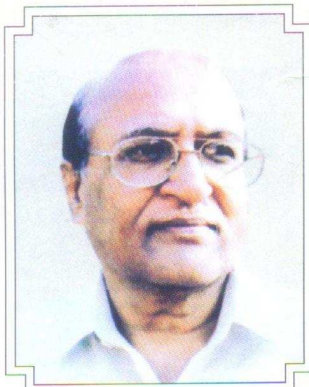
Hon'ble Adv. Raosaheb Shinde

Ex-Chairman



Hon'ble Dr. N.D. Patil

Vice Chairman



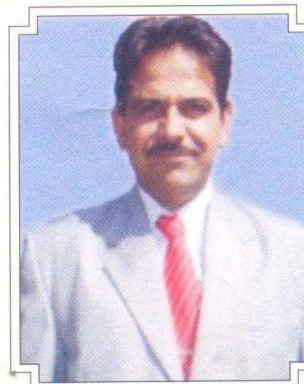
Hon'ble Dr. Anil Patil

Secretary



Hon'ble Prin. J.G. Jadhav

Director



Dr. B.S. Sawant



Indeed it is a matter of prodigious pleasure to handover this news letter to you as we are stepping into new premises. The new campus is proposed to be a 'Residential Management School'. It had been a journey of five years of rapid development of this institute since 2004 and we thought to take a breath on this juncture and share few things with you. Rayat Shikshan Sanstha has expanded wings to sore high in professional education by strengthening its existing management institute. The separation of department and appointment of teaching faculty was bold forward step towards coveted goal. Sanstha has extended the cooperation to its fullest. Institute is recognized research center in management affiliated to Shivaji University, Kolhapur. Institute is doing excellent in all spheres like academics, research and extra curricular activities. Various cells are actively performing their respective tasks. The Research Cell, Consultation Cell, Placement Cell, Karmaveer Entrepreneurship Network Cell and SKY i.e. Social Awareness by KBPIMSR Youth are giving scope for all round development of the students. Institute hosts various intercollegiate competitions like eMBark (Inter-collegiate Management Mega Events Festival), Upbeat (Inter-collegiate Paper Presentation Competition), and Poster Presentation competition. Feather in the cap, the institute is shouldering responsibility as MH-CET MBA/MMS entrance examination center of Directorate of Technical Education, Maharashtra State for written Examination and for Group Discussion and personal interview as well. Another worth mentioning effort is a bold step ahead in research; publication of ETHOS - a biannual research journal in management since 2008. Ethos has been receiving overwhelming response from research scholars and subscribers. Institute is working with a vision, 'To be in the vanguard of management education by making most of both the world, traditional and modern and help entrepreneur acquire skills for the total satisfaction of the stakeholders'. We wish to position institute as the first choice of students aspiring Management education in south west Maharashtra. We are blessed by many stalwarts, guided by many scholars, directed by many experts and patronage by masses called Rayat. We are indebted to all stakeholders of KBPIMSR at this juncture and hope that they would continue to have same patronage in future endeavors.

We would highly appreciate your suggestions to lead institute to its coveted mission.

Thank you,

Dr. B.S.Sawant,
Director,
KBPIMSR, Satara.

Rayat Shikshan Sanstha



Rayat Shikshan Sanstha is one of the leading educational institutions in India. The value of its contribution to education in general is enormously great as it has, from the very beginning, tried all its best to lay emphasis on the education of the downtrodden, the poor and the ignorant who really form the major bulk of society. The founder of the institution, late Padmabhushan Dr. Karmaveer Bhaurao Patil, was a man of the masses, who devoted all his mind and heart to the cause of their education. He had an incisive

understanding of the social ills that beset his times and fully realized the dire need of the spread of education. He believed that education alone could correct the social ills such as cast hierarchy, money-lending, illiteracy, untouchability, superstitions and social and economic inequality; and could be the powerful means of social transformation. All his life, he tried to translate this belief into reality. The Rayat Shikshan Sanstha, stands for, strives for and has accomplished to a great extent what the founder father had in his mind. The Rayat Shikshan Sanstha made astounding progress in the field of education reflecting fully the ideals cherished by the founder. The word 'RAYAT' chosen by Karmaveer to name his Sanstha was significant indeed. 'Rayat' means masses and the educational institution named after it was to focus its attention on the welfare and happiness of the masses. Education then, was but privilege of the select few. The betterment of the under - privileged achieved through the Sanstha is the outcome of Karmaveer Bhaurao Patil's perfect vision and foresight.

The astounding work for the poor and deprived, performed by the Sanstha with the missionary zeal, has been honored with many titles and awards by both the State and the Central Government; viz. "Dalit Mitra Puskar", "Dr. Babasaheb Ambedkar Award", "Shahu Puraskar" etc. The masses have unbounded love and faith in its mission. They have actively supported and blessed the mission to have spread itself into a vast branch-work like that of Banyan Tree, the emblem of the Rayat Shikshan Sanstha. No wonder, the Sanstha today, has emerged as a premier educational institution in India. It has grown and will continue to grow from strength to strength to meet educational and social challenges of new millennium.

A small sapling by 1919 has now turned into a big banyan tree! The Rayat Shikshan Sanstha stands today as a premier educational institute in field of mass education, which is now spread over entire State of Maharashtra and the branches in Northern Karnataka. The colleges run by the Sanstha are now affiliated to three premier universities of Maharashtra viz. Mumbai, Pune and Shivaji. People's faith in Bhaurao was so complete and deep that the Rayat Shikshan Sanstha which he founded could profusely flourish even after his death, which is evident from the presence of its branches with 8 Training Colleges, 425 Secondary Schools, 41 Colleges, 81 Hostels and several other ancillary institutions with students beneficiaries numbering about 4 lakhs.

Sanstha conducts the "Ashram Schools" in the service of downtrodden in the most remote areas of Maharashtra and carrying out its educational, social and cultural activities in almost 20 districts of the state. In pursuit of academic excellence the Sanstha publishes a Research Journal, exclusively devoted for academic betterment and catering to the needs of scholarly world. The Sanstha has also a separate wing under its fold for preparing the students for various competitive examinations at the State and National Level (MPSC and UPSC) which is popularly known as "Karmaveer Prabodhini.

No wonder, therefore the Rayat Shikshan Sanstha is the pride of Maharashtra.



Karmaveer Bhaurao Patil Institute of Management Studies and Research, Satara (KBPIMSR) has bifurcated from Dhananjayrao Gadgil College of Commerce, Satara in November 2006 having sensed and perceived growing needs of ever changing business environment and the corporate world. The MBA course was being run from 1981. This is the only recognized management institute in Satara District, which conducts

management programs i.e. MBA. affiliated to Shivaji University, Kolhapur has recognized this institute as a Research Center for M.Phil and Ph.D. in Commerce and Management from the academic year 2007-2008.

The Institute has modern amenities and facilities keeping in tune with changing scenario. The present intake for MBA of the Institute is 120 students. From this academic year 2011-12, MCA course will commence. Academic excellence has been a prominent feature of these courses. The Institute has on its staff highly qualified and experienced faculty and offers excellent facilities for teaching like updated computer laboratory with internet access to keep abreast with current knowledge and trends in the field. The Institute has best tradition of churning out well-rounded students not only at academics but also in extra curricular activities.

Research Activities

Research Cell

Classroom teaching cannot be a substitute to a real world experience; with this basic intension in mind the faculty in Institute seriously thought of enriching the campus life of students with the real industry hands on experience.

Research cell has been formed in the institute to facilitate the exploring of research acumen and developing and nurturing interest in research. All faculties are the members of this research cell. Every faculty undertakes research in different functional areas of management in which students are given a opportunity to participate right from designing of research, data collection and interpretation of data. Students are hence groomed in research activities. Students have also started taking their own research projects as value addition.

Faculty Research

Research is passion in KBPIMSR. Following are the major research project undertaken by the faculty.

Sr.	Name of Faculty	Topic of Research
1.	Dr. R.D. Kumbhar	ERP in Sugar Industry.
2.	Ms. V.B. Shah	A Study of Investment Pattern of Investors in Satara on the Basis of Socio-Economic Classes.
3.	Ms. R.R. Chavan	A Study of Problems and Prospects of Tourism Sector in Satara District.
4.	Shri. M.B. Bhosale	A Study of Efficacy on Management Institutes Towards Entrepreneurship Development Among Management Students.
5.	Shri. S.R. Nikam	A critical Evaluation of QWL in B School.
6.	Ms. V.V. Jagadale	A Study of Organizational Change and Its Impact on Employees in Manufacturing unit in MIDC Satara.

M.Phil. Awarded



Mrs. Rajashree Chavan for dissertation titled, 'A Study of Customer Relationship Management With Reference to Hotel Industry in Satara District'. Under the guidance of Dr. S.S.Bhola. May 2010.



Mr. Shivraj Nikam for dissertation titled, 'A Study of Employee Turnover with reference to IT Firms In Hinjewadi IT Park, Pune'. Under the guidance of Dr. K.M. Nalawade. May 2010.



Mrs. Pratibha Jagtap for dissertation titled, 'A Study of Non Performing Asset w.r.t. Rajarambapu Co-operative Bank Ltd., Peth, Dist. Sangli'. Under the guidance of Dr. S.S. Bhola, April 2011.



Miss. Jyoti Nigade for dissertation titled, 'A Study of QWL in Unionized SME's w.r.t. Engineering Industry in Satara'. Under the guidance of Dr.S.S.Bhola, May 2011.

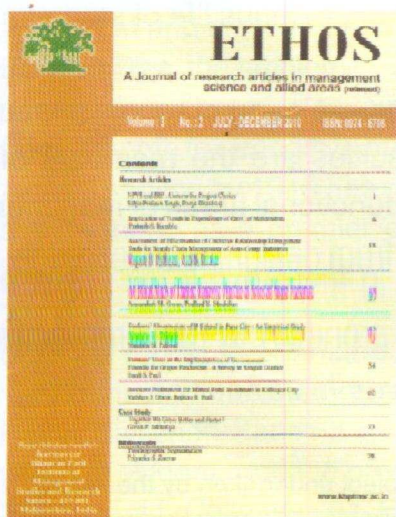
Ph. D. Awarded



Rajendra D. Kumbhar has awarded Ph.D. thesis titled, 'A study of Present Status, Prospects and Problems in Computerisation in Selected Co-operative Sugar Factories in Western Maharastra'. Under the guidance of Dr. B.S. Sawant. October 2010.

Research Journal

ETHOS is a biannual refereed research journal of, KBPIMSR and is published in June and December every year. Ethos is registered with ISSN authority. The Journal has received overwhelming response from scholars and subscribers.



A pool of people working burning midnight oil for Ethos are Dr. Bapusaheb S. Sawant; Editor, Dr. Sarang S. Bhola, Executive Editor and other members of editorial team consists, Prin. Dr. M.A. Shaikh, Prof. V.S.Bhandiwad, Dr. K.M.Nalawade, Dr. S.D.Mundhe, Dr. U.M.Deshmukh, Dr. L.N.Ghatage, Dr.

A.K.Wavare, Dr. Y.R.Patil.

Advisory Board members are: Dr. Anil Patil, Prin. J.G. Jadhav, Dr. S.K. Zaware, Dr. P.S. Rao, Dr. S.A. Somawanshi, Dr. V.M. Chavan, Dr. Pandit Palande, Dr. Sachin Varnekar, Dr. N.J. Pawar, Dr. R.D. Biradar, Dr. R.G. Phadtare, Dr. J.F. Patil, Dr. D.T. Shirke, Dr. Jagannath Patil, Dr. B.V. Sangvikar, Catp.(Dr.) N.P. Sonage.

The prime object of this journal is to disseminate knowledge and information surfaced through fundamental and applied research in functional areas of management and allied subjects viz. Organizational Behavior, Organizational Development, Business Communication, Business Economics, Business Statistics, Information Technology and the like.

The first issue of journal i.e. Volume. 1 Number 1 was published in December 2008, ISSN. 0974-6706 and recently Volume 3 Number 2 issue has been published.

Faculty Publication in Last Five Years.

Sr.	Name of Faculty	Research Articles in Journals	Articles in Seminar/ Conferences	Articles in news paper, magazines, monographs	Chapter writing in books
1.	Dr.B.S.Sawant	08	05	04	04
2.	Dr. S.S. Bhola	13	01	25	16
3.	Dr. R.D. Kumbhar	03	06	00	00
4.	Mrs. V.B.Shah	04	01	20	00
5.	Mr. S.R. Nikam	02	02	00	00
6.	Mrs. R.R.Chavan	02	01	01	00
	TOTAL	32	16	50	20

Articles in Journals by Faculty from 2005 to 2011

Dr. B.S.Sawant

1. "Noisy Fingerprint Image Enhancement Technique For Image Analysis Structure Similarity Measure Approach", International journal of Computer Science and Network Security, IJCSNS, Vol. 7, No.9, September, 30, 2007 PP. 225-30, ISSN 17387906.
2. "Information Technology Act 2000 In India Authentication of E-Documents", International Journal of Digital Forensics Security and Law, Vol. 2(2), November 2007, PP 57-66, ISSN 1558-7215.
3. "Analysis of Mobile User Problems In Western Maharashtra", International Journal of Computer Applications & Business Intelligence, Vol. 1 No. 03, July-Sept 2010, PP 29-36, ISSN 0970- 6240.
4. "Enhancement of Portable Device Using Mobile Cloud Computing", International Journal of Computer Applications & Business Intelligence, Vol. 1 No. 04, Oct-Dec 2010, ISSN 0970- 6240.
5. "Global Identification of the Cyber Laws", CJMR, CMRD Journal of Management Research, Vol. 7 No.1, January-June 2008, ISSN 0973-8401.
6. "Information Technology Governance For Sugar Industry", Bharatiya Sugar, Volume No.33-1, July-Aug 2009, pp 29-36, ISSN 0970-6240.
7. Abstract entitled "Biometric Fingerprint Recognition System", Innovation 2007, University of Pune, 2007.

Dr. Sarang S. Bhola

1. 'Quantification of Quality of Work-life in Machining Industry in Indian Scenario', The ICFAI Journal of Organizational Behavior, Vol. IV, No. 4, October 2005, Reference # 06J-2005-10-02-01, ISSN 0972- 687X, pp. 16-31.
2. 'A Study of Quality of Work Life In Casting and Machine Shop Industry in Kolhapur' An Abstract Finance India, Vol. XX No. 1, March 2006, ISSN 0970-3772, pp. 202-208..
3. 'Quantification of Quality of Work-Life in Foundry Industry A Simple Approach', Indian Foundry Journal, Vol. 51, No. 12, December 2005, ISSN 0379-5446, pp. 42-46.
4. 'Organizational Rejuvenation Through Quality of Work Life', Journal of Shivaji University (Humanities and Social Sciences) Vol. 40, No 2, 2005.pp. 57-64.
5. 'Union and Quality of Work Life', in Trajectory, a publication of Rayat Shikshan Sanstha, Satara, Vol. 13. No. 2, December 2005, pp.117- 126.
6. 'A Study of Entry Hindrances to Entrepreneurship with reference to Management Education Persuants ' in 'Trajectory', Vol. 13, No. 2, December 2007, pp. 80-90.
7. 'A Study on Consumption Pattern of Preserved Foods in Satara District', 'CJMR CMRD Journal of Management Research, ISSN 0973-8401.
8. 'Celebrity Endorsement on Indian Television: An Overview' ICFAI Marketing Mastermind, March 2009, ISSN 0972-5156 pp.17-20.

9. Corporate Social Responsibility: Proximity to Human Resource Management, published in, *HRM Review*, IUP (ICFAI University Press) Publications, Vol. X Issue IV April 2010, pp. 25-31, ISSN 0972 - 5148.
10. 'Analytical Study of Association between Celebrity Advertising and Brand Recall', *The IUP Journal of Brand Management*, March June 2010. ISSN:
11. NPA in Housing Loan A Case Study, 'PMR' Pravara Management Review, Pune, Vol. 9 No. 1, January June 2010, pp. 15-18, ISSN: 0975-7201.
12. A Study of Investment Pattern of Socio- Economic Class A1, *Vishwakarma Business Review*, Vol. 1 Issue 1 January 2011, ISSN : 2229-6514 (Print), 2230-8237 (Online).
13. 'QWL in Unionized Organisation : A Macro Approach', *Anveshan*, Vol. 1. Issue 1. January-June 2011, ISSN : 0976-4186.pp. 16-30.

Dr. Rajendra D. Kumbhar

1. "E-Governance- Prospects and Challenges", 'Ashwattha', Vol -1 Issue-1, Jan-Mar 2007, pp. 19-24(5), ISSN 0976-3740.
2. "Role of Knowledge Management in e-Governance", 'Ashwattha', Vol -3 Issue-3, Jul-Sept 2009, pp. 5-10(6), ISSN 0976-3740.
3. "Implementation of Data Mining for Effective Crime Investigation: A case Study of Maharashtra Police", 'International Journal of Information Systems', Vol -1 Issue-1, Oct-Dec-2010, pp. 1-5(5), ISSN 2229-5429.
4. "ERP for Effective Management of Cooperative Sugar Industries: A Case Study of Sahyadri SSK Ltd., Shirwade-Karad", 'International Journal of information Technology and Knowledge Management ', Vol -4 No-1, Jan-Jun 2011, pp. 33-37(5), ISSN 0973-4414.
5. "Information Technology Governance For Sugar Industry", *Bharatiya Sugar*, Volume No.33-1, July- Aug 2009, pp 29-36, ISSN 0970-6240.

Ms. Vrushali B. Shah

1. 'A Study of Entry Hindrances to Entrepreneurship with reference to Management Education Persuants ' Trajectory, Vol. 13, No. 2, December 2007, pp. 80-90.
2. "Use of MS Excel as a tool for data analysis and MIS" *Tatwa*, a journal published by KLMS, Belgaum, Karnataka. April 2008.
3. 'A Study on Consumption Pattern of Preserved Foods in Satara District', *CJMR CMRD Journal of Management Research*, ISSN 0973-8401

Mr. Shivraj R. Nikam

1. A study of Employee Turnover with reference to IT industry Pune, "ETHOS", Vol: I, No: 1, July-December 2008, ISSN: 0974-6706, pp 57-64.
2. Self-Directed Teams a Case Study of Tata Motors, *ICFAI HRM Review* Vol- X, Issue- VIII, August 2010, ISSN 0972 -5148, pp 42-51.

Ms. Rajashree R. Chavan

1. A Socio Economic Study of Customers of Retail Bazaar in D Grade Town: A Case Study, 'ETHOS', Vol. 1. Number 1, July-December 2008, ISSN: 0974-6706.
2. 'CRM is Not a Task Examples from the Hospitality Sector', *Marketing Mastermind* ICFAI Journal, ISSN 0972-5156, Ref# 10M-2009-07-05-01.
3. 'Global Meltdown & Stress: Indian Scenario', National Conference on 'Impact of Economic Recession on Indian Economy' (sponsored by U.G.C.), 2010.

Recently research cell has completed social project titled, 'A Socio Economic Study - Self-Employment and Entrepreneurial Opportunities for People below Poverty Line in Satara City.' Fifteen students from MBA-II had participated in this study.

Research cell is co-ordinated by Dr. Sarang Bhola.

Consultation Cell :

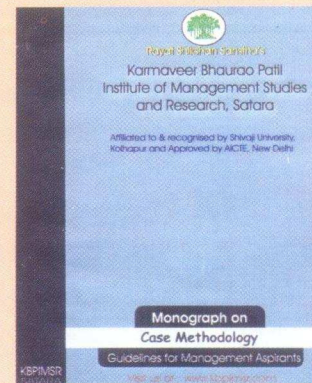
Consultancy cell exists in institute and till date the said cell has completed Five consultancy projects.

1. Hardware inspection & testing consultation of Satara District Co-op. bank, Satara in 2009 - 2010.
2. Hardware inspection & testing consultation of Satara District Co-op. bank, Satara in 2010 - 2011.
3. Consultancy project on Hotel industry of Satara,
4. Project is in preserved foods and
5. Locational survey for retail outlet in Satara has been completed.

Entire consultancy projects have been undertaken on professional basis. Consultancy Cell intends to offer solutions for business problems. It also intends to take up a feasibility study required for setting up of business, improvement in existing strategies, formulation of new strategies and the like. In nutshell, Consultancy Cell intends to become a 'one stop solution' for every dimension of business which may be related to Marketing, Managing or improvement in Human Resources, Study of Consumer choices & consumer satisfaction, Issues relating to finance and computer hardwares, software & networking. Consultation cell is co-ordinated by Dr. Sarang Bhola.

Monograph

Institute has published a monograph on Case Methodology. The monograph contains scholarly written articles on Case Methodology and also contains few cases.



Academic/Scholars

In fact we are not after the quantitative growth of students in terms of marks they secure at university examination since this is a professional course. But certainly we would like to quote that our students are consistently performing and securing ranks in university merit list. Here are our meritorious students.

Miss Kasat Pushpalata Rajendra secured third rank at MBA examination 2009.

Miss Phalake Sushama Pandurang secured fourth rank at MBA examination 2008.

eMBArk



eMBArk is an Inter collegiate mega events competition organized successively since last 5 years. With the theme, 'Voyage with Vision', it has an array of events like Ad- mad show, Role Play, Face Painting, Best Executive Contest. The Event aims at harnessing skills of participants and organizers in various dimensions to make

them ready to take the world in their stride. Thus the main intention is to search out and give room to talents hidden in youth. The competition is open for all students of Post Graduate and Under Graduate courses of Management, Computer, Pharmacy & Engineering Courses. The event is managed by students through forming various committees under the guidance of faculty coordinator. eMBArk is coordinated by Ms. Vrushali Shah.

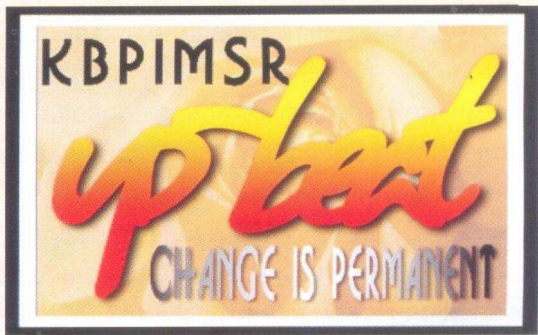


Upbeat

Upbeat is Inter Collegiate & B-School Paper Presentation Competition successively arranged for last four years. Needless to quote in today's scenario change is permanent thing and taking this into consideration Upbeat Paper presentation competition is arranged on contemporary



themes spanning on all functional areas of management



which we would want the upcoming managers, professionals and those who are the rulers of future to be equipped with. Future professionals are expected to contribute their papers on such themes. The competition is open for all students of Post Graduate and Under Graduate courses of Management, Computer, Pharmacy &

Engineering. The event is managed by students through forming various committees under the guidance of faculty coordinator. Upbeat is coordinated by Ms. Vrushali Shah.

Poster Presentation



Since last four years Republic Day is celebrated as Poster Presentation Day. The subjects of poster presentation are based on the current business and social environment to inculcate skill of expression in open environment. Through this presentation Students develop communication and



presentation skills and ability to face open defense. Topics dealt till time are Recession, Terrorism, Downsizing of Organization, Advertising War, Synergy, Electricity (Load Shading) and Employer Brand, Sustainable Development, Waste Management and Stress Management, Protection of Western Ghat, Kopenhegus Conference, Women Entrepreneur and Swine Flu. These topics also inculcate reading habit among students.

This activity is coordinated by Mrs. R.R. Chavan.

Blood Donation



Blood donation camp is organized every year since 2006 on anniversary of Rayat Mauli Late Sou. Laxmibai Bhaurao Patil. In the first year of this activity 65 donors donated blood and helps to the society. This



activity is conducted every year in the month of March.

The donation camp is co-ordinated by Dr. R.D.Kumbhar.

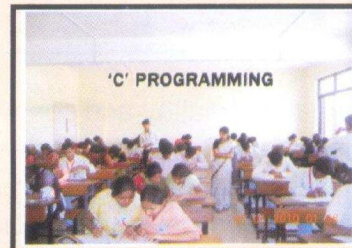
Digit



Digit is intercollegiate software project competition organized by institute for various engineering and management schools in jurisdiction of Shivaji, Pune and Solapur University. The competition has been started from 2008 and it is gaining popularity among budding IT professionals. It challenges students to explore their own creativity and to show off their skills. This competition has always provided the students to gain experience and exposure to the world of science, technology and its advancements.

In the year 2008 there were 20 teams since then number of participants are increasing. This year the event was held in January 2011 and 100 students were participated in competition. The winner of competition is awarded with cash prize, trophy and certificate.

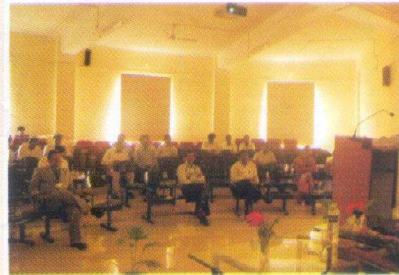
The activity is coordinated by Dr. R.D. Kumbhar.



Teacher's Workshop

In an effort to nurture and develop the faculty of other institutes and colleges in Shivaji University, Kolhapur the institute has been undertaking faculty development workshops. Till time, institute has conducted four workshops with financial assistance from Shivaji University, Kolhapur.

In October 2005, a One-day workshop for MBA, DBM, BBA, BCA & PGDCA teachers was conducted on the theme, Research and Case Methodology, minor research projects and discussion on functional area of these courses. In March 2008, a two day workshop for Management Teachers was conducted on the theme of Case Methodology. In this workshop monograph on case methodology was published and distributed to delegates. In March 2009, a two day workshop for Management Teachers was organized with the theme Project and Research Methodology. In December 2010 two days workshop was organized with a theme, "Syllabus and Research Project." These workshops were coordinated by Dr. Sarang Bhola.



Industrial Visit



With an object to get the practical exposures to various functional areas of management, to know the present management trends, professional practices, problem solving and the like industrial visits are organized. The basic focus of these visits is to expose students to professional world and have interaction with executives of functional area of management. Every year these visits are organized. Few visits to mention: Laxmi Industries Solapur, Parle Industry MIDC

Satara, Kavitsu Indsury MIDC Satara, Hindustan Feeds MIDC Satara, Top Gear MIDC Satara, Chitale Milk Bhilawadi, Gokul Milk Kolhapur, Manugraph Industry Ltd, Kolhapur, Aditi Pectings, Islampur, Rajarambapu Integrated Textile Park, Islampur, Sangli, and the like. Respective faculty class coordinators organize industrial visits.



Sports Activity



Every year in the month of January-February sports week is celebrated. This activity has been chosen with the vision of developing collective physical & mental growth of the participants.

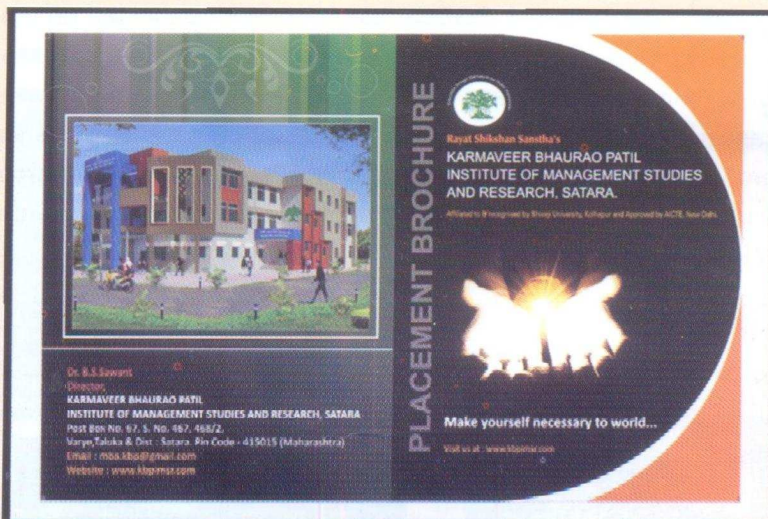
The prime purpose of the sports week is to



create a healthy and conducive environment for excellence in Sports. Sports committee consists of faculty and students representatives. The committee aims to build a spirit of healthy competition by organizing sports events and developing facilities for sports.

The sports week has both Indoor & outdoor games and the prizes are awarded to teams and individuals who prove their mettle. This creates the sense of recognition & motivates the students to achieve more. Sports activity is coordinated by Mr. Mahesh Mane.

Placement Cell



A Placement and Training Cell is established to provide total support in defining the career of the students. The Placement cell ensures suitable Summer Placement (In- Plant Training) and Final Placements through Campus Interviews. The corporate are regularly invited to share their rich experiences by way of Guest Lectures and Presentations. Activity of this cell is to develop placement brochure to be presented to the corporate world.

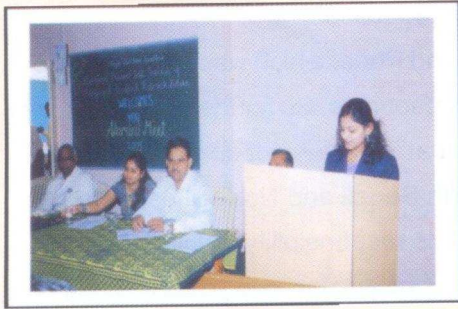
The cell members work as information pool and place the brochure to the recruiters to convince them for campus interview. The placement brochure is developed in soft version and enveloped in beautiful cover to give friendly access to executives. The placement CD contains entire information of students and information of course, faculty, infrastructure and institute.

Placement cell is coordinated by Mr. Shivraj Nikam.

Companies has organized campus interview for final placement in this academic year 2011

- Mindcraft Solution.
- Vishant Export Pvt. Ltd.
- Speciality Urethane Pvt. Ltd.
- SBI Mutual Fund.
- HDFC Bank.
- Mahaprabha Co Design System.
- SmartLeaven Digital System.
- Assent Referenced Directory Pvt. Ltd.

Alumni Cell

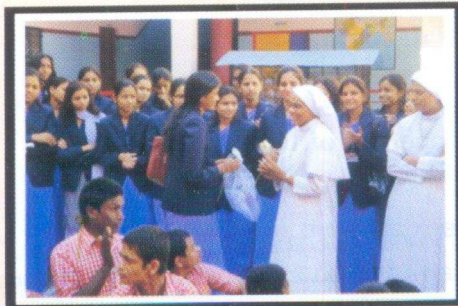


The sole mission of the alumni committee is to support the institution in its endeavour to achieve excellence in teaching, research, social help and to create, nurture a mutually beneficial relationship between the institution, its students and the alumni. The purpose of this organisation is to promote the welfare and excellence of the institute (KBPIMSR), and to assist in the sustainable development mutually beneficial to institute and alumni.

The faculty co-ordinator for alumni cell is Mr. Shivraj Nikam.



SKY

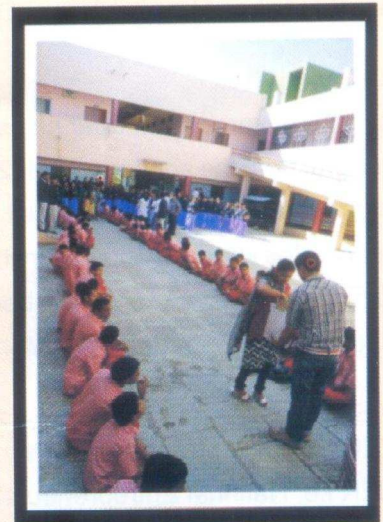


'SKY' is the social activity by 'KBPIMSR Youth'. This activity is initiated three years back in 2007, Under 'SKY' activity it is our tradition to visit 'Asha Bhavan'- A Home for Mentally challenged Children, on every 15 August and

26 January. Students share some joyful moments with children. The needful things brought for children are distributed. The children also exhibit Dance Performances and sing songs.

SKY activity is launched keeping in mind social responsiveness and make aware students about the social problems.

This activity is lead by Mr. Mohan Bhosale



Our Social Activities

MBA Entrance Guidance Classes

Satara falls in sub-urban area and is surrounded by villages. Getting proper guidance especially for professional courses is paucity. Disseminating information of the professional course in management remains a permanent activity. Every faculty once in a year visits colleges in Satara and vicinity to promulgate information on undergraduate and postgraduate management courses. In return institute started receiving overwhelming response. On the request of students aspiring professional education, institute has initiated MBA entrance guidance classes, imparting specialized faculty, and charging meager fees.

Mr. M.B.Mane and Mrs. R.R.Chavan are handling this activity.

MBA CET and GD & PI Center:

The institute is pioneer institute to start professional education in Management in Satara district and has always taken a leaders role in introducing various reforms in management education.

Earlier the CET written examination and GDPI Center was at Kolhapur and Pune, which was inconvenient to the students of Satara and vicinity on the magnitude of time and other resources. So for the convenience of students a need of GDPI center at Satara was a necessity. The center at Satara is not only beneficial to the students from Satara and Vicinity but also to the students from North Sangli and North-West Solapur District. Hence we have conveyed our wish and williness to shoulder this responsibility to Directorate of Technical Education, Maharashtra State, Mumbai, which was granted in 2008 and last two years institute is operating as the Center for MBA CET written Examination and GD & PI.

MBA CET Cell is coordinated by Dr. Sarang Bhola.

Counseling Cell

Counseling to students of institute and other student aspirants for management education is indispensable part of faculty at KBPIMSR. Students not only approach with academic problems but personal problems as well which need to handle with proper care and faculty and members of administrative crew are doing needful for the students. Counseling is done by entire faculty, medical counseling is provided by Dr. Anil Shinge, Adhar Hospital, Varye, Dist Satara.

NSS Activity

Shivaji University Kolhapur has sanctioned National Service Scheme's one Unit of 100 candidates to this institute from the academic year 2010-2011.

At the first year of NSS, the cell has organized one NSS camp of a week at Varye Tal. Dist. Satara. 50 candidates were participated in the said camp. Besides the camp NSS cell has organized medical checkup camp for women and children, tree plantation activity and the like.

The cell is coordinated by Mr. Mohan Bhosale.

KEN Cell

KEN stands for Karmaveer Entrepreneurship Network; it is a constituent body of students affiliated to NEN i.e. National Entrepreneurship Network. Students they select their representatives and Director of institute also nominate students on the body of KEN for the academic year. The very objectives of KEN are, to develop awareness of Entrepreneurship, to know their developments as a successful Entrepreneur, to know well how they were groomed, to know the opportunities in their respective field and to motivate the students to develop entrepreneurial skill.

The KEN cell is coordinated by Mrs. R.R.Chavan.

News Letter Committee

Editor	:	Dr. B. S. Sawant.
Executive Editor	:	Dr. S. S. Bhola.
Member	:	Ravindra More.
Students	:	1. Pankaj Dhole. 2. Nikhil Pol. 3. Pravin Malave. 4. Amol Shinde.



Faculty Profile:

Core Faculty

Sr.	Name of Faculty	Educational Qualification
1	Dr. Sawant Bapusaheb Shrihari	M.Com, M.B.A., M.C.M. Ph.D
2	Dr. Bhola Sarang Shankar	M.B.A., Ph.D
3	Dr. Kumbhar Rajendra Dattatrya	M.C.M., M.C.A., P.G.D.C.B.M., Ph.D
4	Mr. Bhosale Mohan Bhagwat	M.Com, M.Phil., D.I.M.
5	Ms. Shah Vrushali Bhushan	M.Com, C.A., Grad C.W.A., D.I.S.A.
6	Mr. Nikam Shivraj Rajaram	B.Sc., M.B.A., M.Phil.
7	Mr. Chavan Santosh Babanrao	B.E. (Production), MBA
8	Mr. Mane Mahesh Bhagwan	B.Sc.(Agri), M.B.A.
9	Ms. Chavan Rajashree Ramesh	M.B.A., M.Phil.
10	Mr. More Ravindra Laxman	B.C.A., M.C.A.
11	Mr. Patil Ganesh N	B.Sc., M.C.A.
12	Mrs. Kulkarni Kirti Arun	M.Sc.(Statistics)
13	Miss. Katkar Priyanka Anandrao	B.Sc., M.C.A.
14	Ms. Jagadale Vibhavari Vishwanath	B.Sc., L.L.B., M.B.A.
15	Miss. Bagwan Asma Kayyum	B.Com., M.B.A.

Associate Faculty

1	Mr. V.S. Bhandiwad	M.Com, M.Phil.
2	Dr. K.M. Nalawade	M.Sc. (Statistics), Ph.D.
3	Dr. L.M. Ghatage	M.A. (Economics), Ph.D.
4	Dr. A.K. Wavare	M.A. (Economics), Ph.D.
5	Mr. Sudhir Apte	M.Tech., MBA.



Rayat Shikshan Sanstha's

**KARMAVEER BHAURAO PATIL INSTITUTE OF MANAGEMENT
STUDIES AND RESEARCH, SATARA**

Post Box No. 67, Survey No. 467, 468/2, Varye, Tal & Dist. Satara.

Ph: (02162) 230011, 261088 - Fax: (02162) 229089

Web site: www.kbpimsr.ac.in - E-mail: mba.kbp@gmail.com